

**Technical in-dept Analysis for turbo  
AlfaRomeo/Fiat/Opel 1.6 from 2014  
54389700008 (55266228) – 54389700026  
(46339846)**

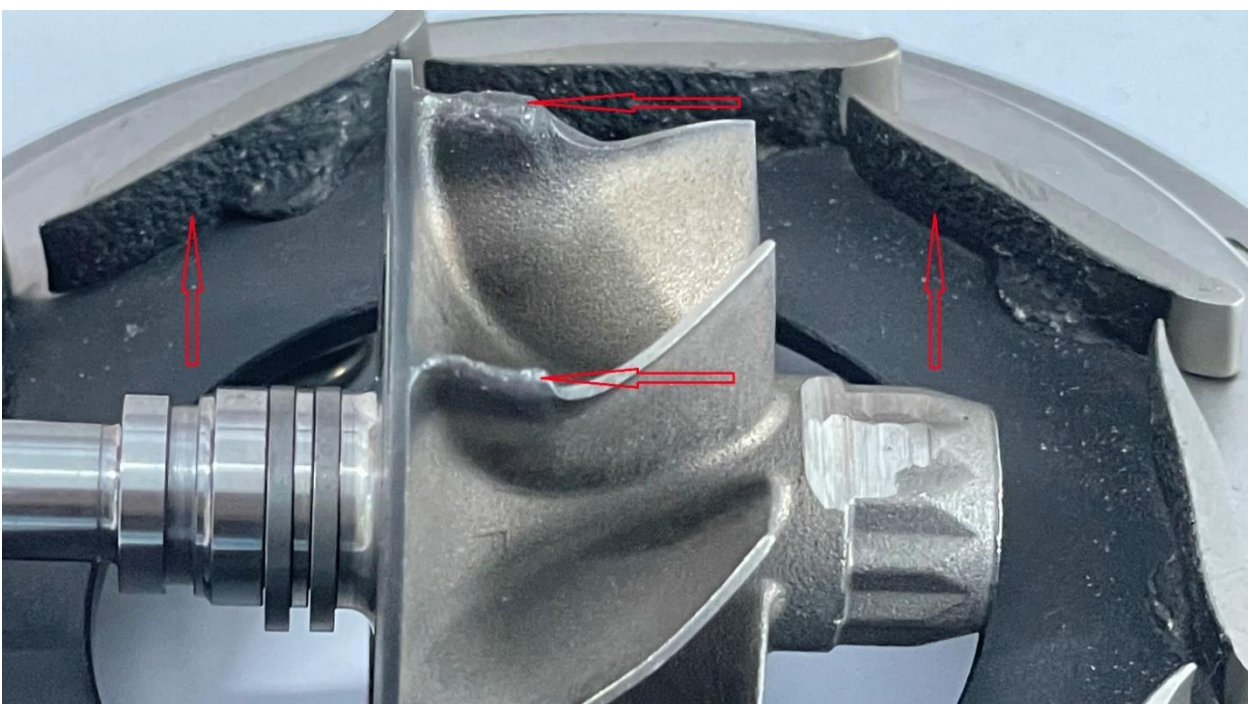
The reviews below apply in general when replacing any type of turbocharger, specifically for the turbo above.

When a turbocharger fails it leaves a trail of debris in the circuit. The residues go to nest in remote and unthinkable places and **they are released during the following starting of the engine**. For this reason it's basic to proceed with an **extraordinary mantainance** and a **thorough cleaning or substitution of the interesting parts** of the engine, like:

- **EGR System - High and Low Pressure**
- **Compressor System**
- **Intercooler and relative sleeves**
- **Exhaust System (FAP, catalysts, exhaust housings, etc..)**
- **Air filter and relative vane**
- **All air tubes of the engine**

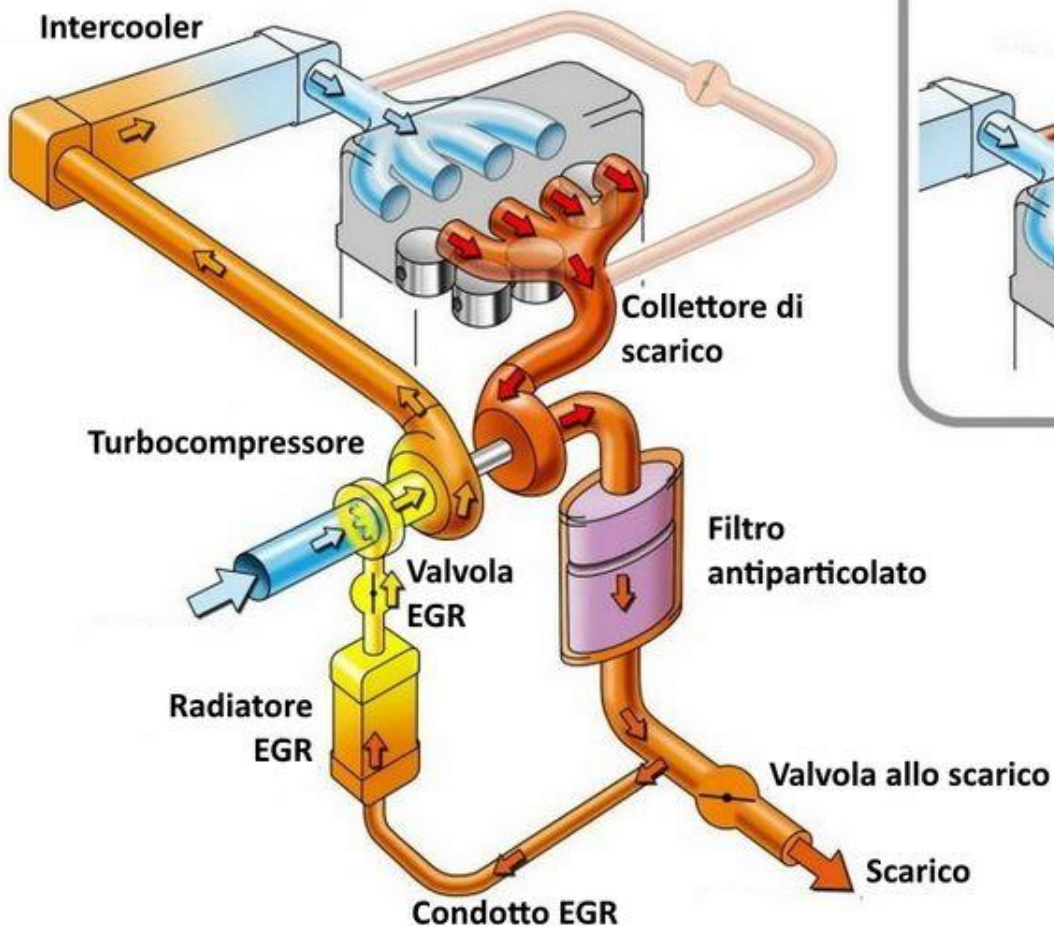
Pay particular attention if debries are been drawn into the engine combustion chamber because they cannot be removed with a normal cleaning operation. It's basic that they're expelled before a new turbo is installed.

In case that debries are not properly removed they'll be expelled from exhaust side and will impact to shaft and nozzle ring. Photos below show damages of this kind of irreversible breaking.



# EGR SYSTEM

## EGR a bassa pressione



## EGR ad alta pressione

